

Aquila 46 Coupe Power Catamaran Specifications

Length overall	14.44 M / 47' 4"
Beam overall	5.46 M / 17' 11"
Height above waterline w/hard top excl. electronics	3.36 M / 11' 0"
Draft with outboards and inboards up with foil	1.08 M / 3' 7"
Draft with outboards down with foil	1.13 M / 3' 9"
Draft with inboards down with foil	1.23 M / 4' 1"
Approx Dry Weight (Dual V12-600hp engines)	14,500 KG / 31,970 LB
Cabins	2
Heads with separate showers	2

Tankage

Fuel tank (total)	2,334 L / 616 GAL
Water tank (standard, total)	440 L / 116 GAL
Holding tank (total)	160 L / 42 GAL

CE Certification

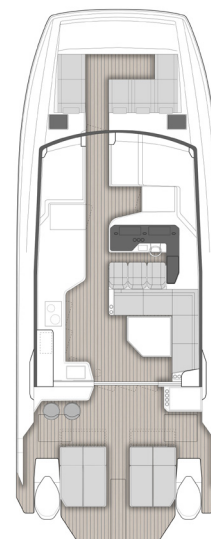
B (offshore) - 12 PAX
 C (coastal) - 22 PAX
 D (inland) - 32 PAX

Propulsion

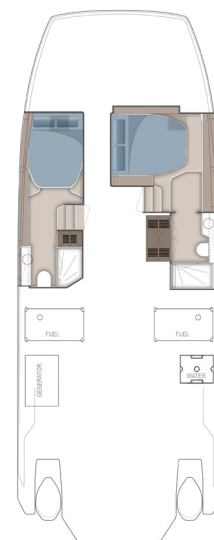
Standard	2 x 600hp Black Mercury Verado V12 with JPO
Optional	2 x Volvo Penta D6-440hp DPI sterndrive diesel engines

Construction

- Resin infused Vinylester throughout hull and deck build material
- Resin infused Vinylester throughout bulkhead and reinforcing. No plywood in structural components or below waterline
- PVC Core Materials vary in density dependent on loads
- NPG gelcoat of hull
- Water tight bulkheads fore and aft
- Carbon fiber primary main foil (semi foiling)



MAIN DECK



CABINS

All specifications and options are subject to change by Sino Eagle Yachts at their sole discretion. Performance is purely indicative and not a contractual commitment. Performance is subject to many variances outside the control of Sino Eagle Yachts. Specifications and graphics in this brochure are non-binding and customer must enter into contractual agreement with the Dealer or Agent of Record.

Features

- An exceptional performing and seaworthy double stepped hull shape providing first in class stability and fuel efficiency
- Aquila Hydro Glide carbon fiber semi foiling system providing first in class performance, comfort, and fuel efficiency
- The perfect balance of indoor and outdoor spaces, all in a single level living package
- Spacious interior cabins with large hull side windows offering excellent views of the water
- Expansive electric opening fiberglass sunroof providing protection from sun and weather (option)
- C-Zone digital switching system for DC powered components
- Ability to choose between Mercury outboard power or Volvo Penta diesel propulsion
- Easy access on and off from docks with standard port and starboard opening cockpit doors
- Port and starboard side boarding gates
- PVC rub rail with 316 stainless steel insert offering all round protection
- Windscreen in tempered glass with variable speed windscreen wiper
- Bow deck hatch allowing access to anchor chain area and windlass
- Deck fill plates in 316 stainless steel - 1x water - 2x fuel - 2 x waste
- Stainless steel mooring cleats thru bolted (12 Total)
- Well placed ergonomic handrails in 316 stainless ensuring secure movement onboard
- LED navigation lights, running lights and anchoring light
- Custom stainless steel retractable swim ladder with teak steps at aft deck swim platform
- Aft cockpit and bow area all self draining
- Optional synthetic marine decking throughout all main level exterior and interior deck space
- Aft cockpit with heavy duty stainless steel sliding door with flip up bow counter window
- Mechanical room/diesel engine access through large deck hatches
- LED courtesy lighting located throughout
- Easy lift gas shocks for all large hatches

Interior Layout

- Single level deck plan with large cabins in each hull
- Master cabin in starboard hull with VIP cabin in port hull - each with walk in shower, vanity area, and fresh water flush toilet
- Salon area with L-shaped seating to starboard, electric retracting table which goes flush with deck when not in use
- Large tempered glass windows offering full 360 degree views
- Sliding aft salon door with separate opening flip up bar window (converts to bar when open)
- Galley area to port with microwave, sink, storage cabinets, and flip up bar window area
- Carbon fiber central electric actuated hatch/door providing access to forward bow seating
- Comfortable helm seating for three providing spacious seating for captain and two passengers

Hull and Deck Features

- Double stepped hull design offering best in class offshore handling capabilities
- Carbon fiber Aquila Hydro Glide semi-foiling system
- Comfortable and protected bow seating that comfortably seats up to 4 passengers with arm rests and leg supports
- Two (2) large aft convertible sun loungers providing ability to sit facing forward or convert to sun lounger with storage below
- Designated area for optional electric BBQ
- Stainless steel handholds in AIS316
- Opening port lights installed in hull side windows (4 total)
- Sliding glass door with opening window bar area, lockable with threshold - entrance to salon
- Bar area with 3 x 316 stainless steel bar stools and large hinged window to open up galley
- Two large sun loungers with convertible back rest and storage inside
- Mechanical/diesel engine room access from deck hatches
- Marine waterproof 7.7" Fusion speakers (4)
- Fusion system wireless remote control
- Port and starboard side boarding gates with robust stainless steel hinge and fittings
- LED courtesy lighting
- Overhead LED lighting
- Starboard side storage module with optional BBQ and fridge/freezer
- Integrated side deck steps providing easy access to raised side decks
- Stainless steel gates (2) on port and starboard side
- Optional retractable canvas sunshade system with canvas material
- Self draining cockpit area
- Concealed shore power plug access and fresh water washdown connection
- Slide out stainless steel swim ladder with teak steps
- Fresh water pull out shower (hot/cold)

Aft Deck and Cockpit

Mooring System

- Electric windlass (24v-1500W) with hard wired handheld control at anchor locker
- Polished stainless steel 44lbs anchor with rope(200ft), galvanized anchor chain(49ft)
- Mooring kit - 6 x fenders and 6 x mooring lines

Forward Bow Seating

- Central electric walkthrough opening hatch/door manufactured in carbon fiber materials to increase strength and reduce weight providing access to bow seating
- Forward facing seating with head rests and flip down arm rests
- Adjustable leg support for seats
- Cup holders (8)
- Stainless steel handrails
- Wireless chargers (2)
- Concealed storage areas to outboard sides for cell phone and cup holders
- Integrated LED courtesy lighting
- Marine waterproof 7.7" speakers (2)
- Hidden flip down table
- Optional synthetic marine decking
- Central hatch for access to windlass/anchoring system with separate chain locker hatch
- Port and starboard hatches providing wet storage space for fenders and mooring lines
- Storage lockers located under port and starboard seating

Interior Helm Console / Seating

- Comfortable carbon helm seating including flip up bolsters and electric seat sliders
- Cup holders (3)
- AC vents for direct air flow (aircon optional)
- Black acrylic helm panel for flush mount electronics installation
- Wireless phone chargers (1)
- Stainless steel hand hold
- Recessed foot rests
- Manual slide opening window next to helm
- Variable position steering wheel offering multiple function use controls at your finger tips
- Magnetic compass
- USB and USB-C outlets
- Windshield wiper system connected to fresh water supply with control at helm
- Ergonomically positioned throttle and joystick controls

Salon / Galley

- Electric blinds for port and starboard side windows
- Laminate finished cabinetry with solid wood capping throughout with accented wall and ceiling coverings
- Electric retracting table which goes flush with deck when not in use
- Multi-Zone sound system with Fusion head unit and 4 x flush mounted 7.7" speakers
- Upholstered panel ceilings with decorative LED accent lighting
- Comfortable L-shaped seating to starboard
- Wireless chargers (2)
- Cup holders (4)
- Optional expansive electric sunroof
- Designated drop down TV system from ceiling (option)
- Carbon monoxide alarm
- Galley area to port side including:
 - Corian work surface
 - 130L/4.5 cu. ft. fridge/freezer
 - 30L/1.1 cu. ft. microwave
 - Storage drawers and cabinets throughout
 - Wash basin with stainless steel faucet
 - AC power outlets
 - Manual sliding window
 - Integrated stainless steel handrails under Corian countertops
- Optional synthetic marine decking

Owner and VIP Guest Cabin (owner cabin on starboard side)

- Large hull side window providing natural light into cabin with manual operated blinds
- Laminate finished cabinetry with solid wood capping throughout with accented wall and ceiling coverings
- Private access door to cabin for privacy
- Aircon vents with aircon display/controller (option)
- Opening ventilation hatch in ceiling with concealed blind
- LED reading lights (2)
- LED overhead ceiling lights
- Storage shelves, lockers and drawers with additional storage under cabin mattress
- Memory foam mattress
- Cabin mattress size: Master cabin: 77in (196cm) x 65in (165cm) VIP guest cabin: 79in (201cm) x 62in (160cm)
- Wireless chargers - one in each cabin
- Each cabin with Fusion head unit and 2 x 7.7" ceiling mounted speakers
- Synthetic wear resistant flooring offering maintenance free natural look

- AC power sockets and USB outlets (2)
- Upholstered panel ceilings with decorative LED accent lighting
- Carbon monoxide alarm
- Large hanging locker with storage
- Separate bathroom/shower area including:
 - Hull side window with blind
 - Opening portlight window for ventilation
 - Bathroom vanity with sink and faucet
 - GFCI protected outlets
 - Toothbrush and towel holders
 - Corian countertop
 - Fresh water electric flushing toilet
 - Walk in shower with door and port light opening window
 - Mirrors above vanity

Mechanical / Diesel Engine Rooms (diesel engines optional)

- Automatic fire suppression heat activated system with alarm monitor(s) at helm station
- Engine fuel system filters
- LED lighting
- Thru hulls with strainers for water supply to primary equipment
- Automatic bilge pump in each engine room
- Excellent all around engine and systems access for ease of maintenance
- Additional storage for storing water toys and water sports equipment

Electrical System

- C-Zone DC digital switching system
- Inverter/battery charger Mastervolt 24/3500W (1)
- Master control panel for 24v and shore power service
- Dedicated engine battery chargers
- Remote battery master switches at panel
- Engine parallel control remote switch
- Dedicated engine start batteries (2 x AGM)
- House batteries = 4 x 230 A/h AGM
- Shore side electrical system
- Concealed 50A shore power supply inlet (1)
- Galvanic Isolator protection system

Fuel System

- Fully independent Heavy Gauge aluminum tanks totaling 2334 Liter/616 US G with gauge at helm station
- Manual fuel shut off valves
- Fuel tank vents
- Natural ventilation of locker
- Water and air tight bulkhead separating cabin area
- Fuel filters

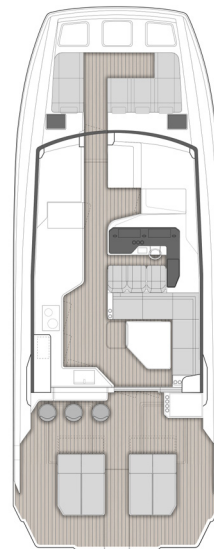
Water and Bilge System

- Automatic 24v fresh water pump
- Water heater (1) @ 40L/10.5Gal (only operable from shore power and/or optional generator)
- 1 x 440 Liter/116 US G fresh water tank
- Transom pull out shower mixer (hot/cold)
- Automatic 24 v bilge pumps (6)

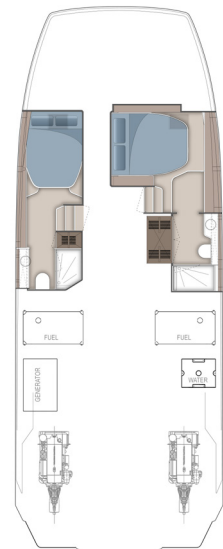
Waste System

- Automatic grey water pump connected to each shower drain for direct overboard discharge
- 2 x 80L/21Gal black water tanks with sea discharge pumps and dockside pump out
- Black and fresh water levels visible through C-Zone system

Optional Configurations:



MAIN DECK
(Inboard Engines)



CABINS
(Inboard Engines)